

A Powerful Cost Accounting tool to track your IMAGER's usage, now with enhanced reporting capabilities!

SharpAccountant v2 is a versatile easy to use tool designed to help you track and allocate the cost of operating your Sharp Digital IMAGERs™. With SharpAccountant you can easily monitor and track your IMAGER's copy, print, fax and scan activity whether in black and white or color, enabling you to compile valuable reports providing analysis that can affect your company's bottom line. SharpAccountant empowers you by allowing you to monitor printer usage by account code & name, device, group and function (copy, print, fax, scan or color).

Complement your Sharp Digital IMAGER with SharpAccountant, Sharp's powerful tracking and analysis software.



Easy-to-use software enables you to develop device profiles, set costs, and generate valuable reports.

new features

- Now **supports** processing of emails from **MX Series IMAGERs**
Now supporting **IMAP** and **Microsoft Exchange Server**
- Simpler and **quicker installation**
- **Enhanced reporting** capabilities to include:
 - Reporting by **device and group**
 - Reporting by **Account Code & Name**
 - Track **fax usage**



key features

- **Track** copy, print, fax, scan and color **usage** by **account code & name, device or function**
- Develop **cost profiles** for each MFP or group
- **Charge back costs** to department or end users
- **Built-in data export** to CSV files, tab delimited files, and e-mail
- Easy-to-use reporting with **pre-defined and custom date ranges** for added convenience and flexibility
- **Generate** easy-to-read **charts and graphs**
- **Supports** full line of **Sharp Digital IMAGERs**
- **e-mail** based device **communication** allows participating devices to reside **anywhere worldwide**



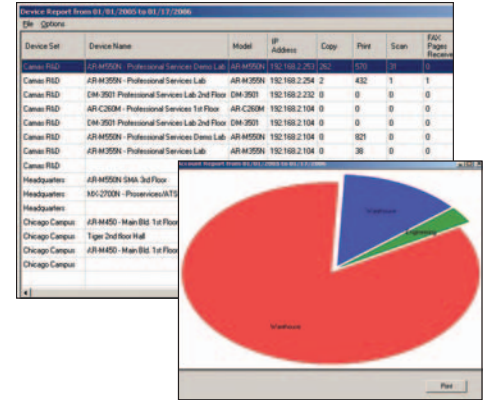
Monitor and track how your MFPs are being used—and what it costs to use them with SharpAccountant.

Analyze MFP Operating Costs and Device Productivity

With SharpAccountant, you can analyze MFP usage by account code, device, function (copy, print, fax, or scan). By tracking device usage, you can be sure that all MFPs are being used to their maximum efficiency. SharpAccountant allows you to develop cost profiles for each MFP or group, and allows you to budget for supplies and consumables more accurately. It also supports most RED-enabled Sharp MFPs and printers, so you get a comprehensive usage overview of each device and its impact on your bottom line.

Generate Easy-to-Read Charts and Reports

The data collected by SharpAccountant can be viewed in both numeric format and easy-to-read graphs, so it's simple to analyze the information. Reports can be exported as CSV files or tab delimited files for the greatest compatibility with popular spreadsheet applications. For added convenience reports can also be e-mailed directly from SharpAccountant.



SharpAccountant v2 enables you to generate reports in both numeric and graphical formats.

Supported Sharp MFPs

Reports/Models	Multifunction Devices ¹						Printers		Fax
	AR-M162/M207 ² AR-168S/168D Series ²	AR-M237/M277 AR-M350/M450 Series	AR-M355/M455 AR-M550/M620/ M700 Series	AR-C260M ³ AR-BC260M/ BC320M ³ Series	MX-2300N/2700N	MX-5500N/6200N/ 7000N MX-3500N/ 3501N/4501N	AR-P350 AR-P450	AR-C260P ³	FO-DC550 ⁵ Series
Machine Total Output ⁴	Yes	Yes	Yes	Yes	Yes	Yes	Yes	Yes	Yes
Machine Total Copies	Yes	Yes	Yes	Yes	Yes	Yes	—	—	Yes
Machine Total Prints	Yes	Yes	Yes	Yes	Yes	Yes	Yes	Yes	Yes
Machine Total Scans	Yes	Yes	Yes	Yes	Yes	Yes	—	—	Yes ⁵
Machine Total Fax Prints	—	—	—	—	Yes	Yes	—	—	—
Machine Total Fax Scans	—	—	—	—	Yes	Yes	—	—	—
Machine Total Fax Transmitted	—	—	—	—	Yes	Yes	—	—	—
Account Code Total Output	—	Yes	Yes	Yes	Yes	Yes	Yes	Yes	—
Account Code Total Copies	—	—	Yes	Yes	Yes	Yes	—	—	—
Account Code Total Prints	—	—	Yes	Yes	Yes	Yes	Yes	Yes	—
Account Code Total Scans	—	—	Yes	Yes	Yes	Yes	—	—	—
Account Code Total Fax Prints	—	—	—	—	Yes	Yes	—	—	—
Account Code Total Fax Scans	—	—	—	—	Yes	Yes	—	—	—
Account Code Total Fax Transmitted	—	—	—	—	Yes	Yes	—	—	—
Total Number Account Codes Available	—	100	500	200	200	1000	100	200	—

¹ SharpAccountant v2 also supports AR-M235/275/287/337/407/507

² Requires AR-NB2/NB3

³ Color devices provide breakout for black and full color. For copy totals, single color is also provided

⁴ Total output does not include scans

⁵ FO-DC550: All scans are counted as monochrome

hardware requirements

Computer Type	IBM® PC/AT or compatible computer equipped with Intel® Pentium® III 600MHz processor, 256MB of RAM and 360MB of free hard disk space. (Required for full install of all components).
Operating System	Windows® 2000 (SP4), Windows XP Professional (SP2), Windows 2003 (SP1)
Other software Requirements	MDAC 2.8, .Net 2.0 Framework, SQL Server 2005 or SQL Server 2005 Express

e-mail server requirements

e-mail Server	Version	Prerequisites for use
Microsoft Exchange Server	Version 5.5 and above Version 6.0 and 6.5	POP3 & IMAP WebDAV support
Lotus Domino Server	Version 4.5 and above	POP3
UNIX POP3 (RFC 1939) and SMTP (RFC 821) Server	Any version that supports RFC 1939 and RFC 821 standards	POP3 & IMAP